

6-12 Temperature

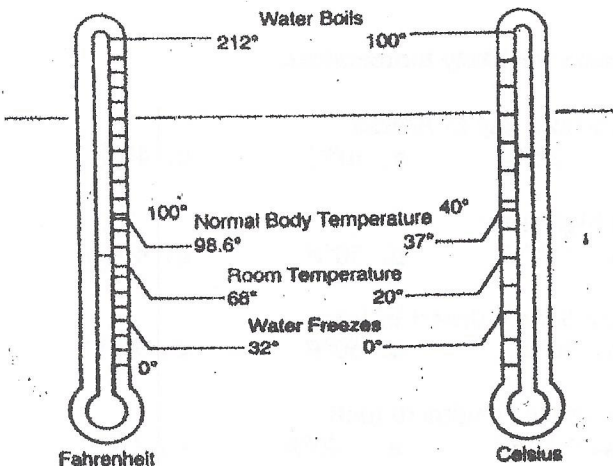
Name _____

Homework Use after page 169.

Example Estimate the likely temperature. Mike and Anna are making a snow fort.

- A. 30°C B. 30°F
- C. 22°C D. 52°F

30°C, 22°C, and 52°F are all too hot. The likely temperature is 30°F.

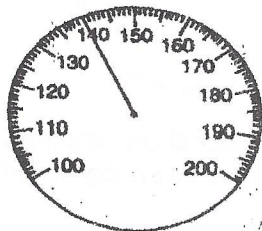


Estimate the likely temperature.

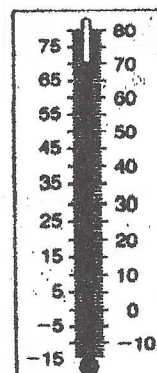
- 1. a snowball A. 30°F B. 25°C C. 0°F D. 32°C _____
- 2. water skiing A. 70°C B. 80°F C. 40°F D. 10°C _____
- 3. baking a casserole A. 90°C B. 100°F C. 300°C D. 375°F _____

Decide if the temperature is Fahrenheit or Celsius.

- 4. an oven set to bake enchiladas



- 5. the outdoor temperature on a warm summer day



Mixed Skills Review

Round to the nearest hundredth.

- 6. 1.094 _____
- 7. 0.0092 _____
- 8. 15.0211 _____
- 9. 1.111 _____

6-12 Temperature

Name _____

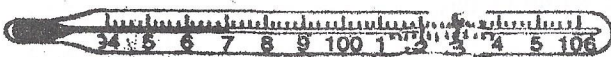
Skills Practice Use after page 169.

Estimate the likely temperature.

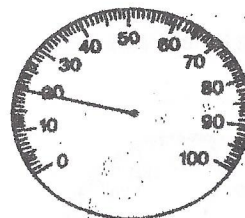
- | | | | | | |
|---------------------------------|--------------------------|--------------------------|--------------------------|--------------------------|-------|
| 1. a winter day in Alaska | A. -22°F | B. 10°C | C. 40°F | D. 100°C | _____ |
| 2. a high fever | A. -14°C | B. 50°F | C. 40°C | D. 198°F | _____ |
| 3. the Sahara desert in July | A. 50°C | B. 50°F | C. 90°C | D. 90°F | _____ |
| 4. when ice begins to melt | A. -40°C | B. -40°F | C. 1°C | D. 1°F | _____ |
| 5. comfortable room temperature | A. 0°C | B. 20°F | C. 50°C | D. 70°F | _____ |
| 6. boiling water | A. 100°F | B. 100°C | C. 150°F | D. 150°C | _____ |

Read the thermometer. Decide if the temperature is Fahrenheit or Celsius.

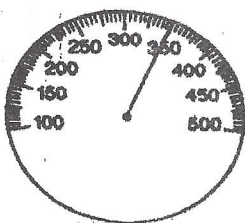
7. This thermometer shows the body temperature of a patient with a slight chill. _____



8. This thermometer shows the temperature during a blizzard. _____



9. The oven thermometer is set for baking a casserole. _____



10. This thermometer shows the water temperature on a warm day at the beach. _____

